



# DELHI PUBLIC SCHOOL, GWALIOR

(Under the Aegis of DPS Society, New Delhi)

## MODEL TEST PAPER

CLASS – VI

SUBJECT – SCIENCE

Time: 3 hrs.

M.M.: 80

### General Instructions:

- (i) The question paper comprises of three sections, A, B and C. You have to attempt all the sections.
- (ii) All questions are compulsory.
- (iii) All questions of Section-A and C are to be attempted separately.
- (iv) There is an internal choice in four questions of three marks each and three questions of five marks each.
- (v) Question number 1 to 14 in Section- A are questions carrying 1 mark each. You have to provide one most appropriate response for all the question.
- (vi) Question number 15 to 24 in Section- B are of 3 marks each. They are to be answered briefly in about 50 words each.
- (vii) Question number 25 to 30 in Section- C are of 5 marks each. They are to be answered in about 70 words each.

### Section-A

#### [Q.1 to Q.14 1 Mark Objective type questions]

1. Which of the following does not pollute air?
  - a. Forest fire
  - b. Exhaust gases from vehicles
  - c. Growing trees in abundance
  - d. Lighting bonfires
2. Classify the following into climbers and creepers:  
Money plant, Strawberry plant, Grape vine, Bitter gourd, Pea Plant
3.
  - (i) What converts chemical energy into electrical energy?
  - (ii) Can we use rubber bands or jute string as connecting wire?
4.
  - (i) \_\_\_\_\_ is the name of the natural magnet.
  - (ii) What happens if a magnet is heated?
5.
  - (i) Define the term, “Evaporation”.
  - (ii) Complete the following:-  
Water table is a term related to .....
    - a. River water
    - b. Surface runoff
    - c. Ground water
    - d. Collected water

### OR

- (i) Define the following terms:-
  - a. Freezing
  - b. Precipitation

6. Look at the below picture and answer the following questions very shortly:



- (i) What do you interpret from the picture?
- (ii) Why do you think the man is covering his face?

7. Answer question numbers 7(a) – 7(b) on the basis of your understanding of the following paragraph and the related studied concepts:

The waste that can be broken down or decomposed by the rapid action of microorganisms is known as biodegradable waste. Such waste is organic (natural) and gets decomposed back into natural elements. Biodegradable waste can be decomposed with oxygen or without oxygen. The rate of decomposition may vary according to the properties of the material or other factors like location (landfill or open area).

Some common examples are –

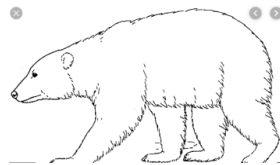
- (i) Human and animal waste
- (ii) Food waste
- (iii) Plant products
- (iv) Wood or paper
- (v) Kitchen waste (Leftover food or vegetable peels)

Biodegradable waste should be handled properly and disposed of by using compostable bins & bags. In this way, the waste can decompose quickly and provide nourishment to the soil.

- a. Define biodegradable waste.
- b. Name two methods through which biodegradable waste can be turned into manure.

8. Identify the habitat of these living organisms and mention one adaptation required to survive in that habitat.

(i)



- a. Habitat \_\_\_\_\_
- b. Adaptation \_\_\_\_\_

(ii)



- a. Habitat \_\_\_\_\_
- b. Adaptation \_\_\_\_\_

**OR**

Look at the pictures below and answer the following-

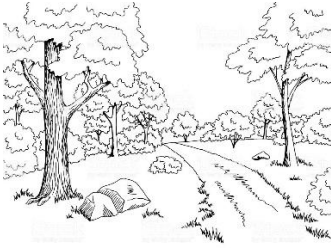


Figure 1: Forest

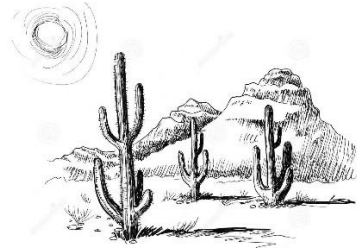


Figure 2: desert

- (i) Name one plant and one animal that exist in both the figure's habitat.
- (ii) How does the climate of the two habitats differ?

9. Give one example for each of the following:

- |                       |                         |
|-----------------------|-------------------------|
| (i) Periodic motion   | (ii) Rectilinear motion |
| (iii) Circular motion | (iv) Rotational motion  |

10. Kneading the flour is both chemical and reversible change. Justify it.

11. Distinguish between petals and sepals.

12. The exoskeleton of cockroach is made up of \_\_\_\_\_.

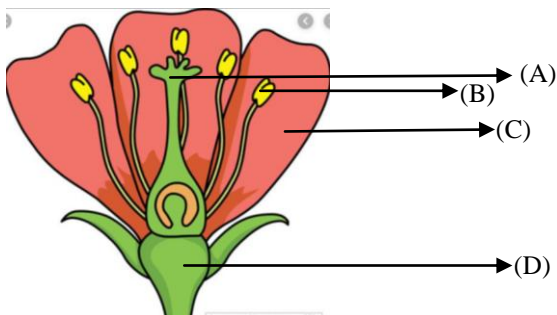
- (a) calcium      (b) cellulose      (c) chitin      (d) iron

**OR**

What type of joints are found in shoulder and girdle?

13. Why do sea animals have streamlined body?

14. Label the following parts:



**Section-B**

[Q.15 to Q.24 3 Marks      Short answer type questions]

15. (i) Construct a pie chart to show uses of water by different sectors.  
(ii) State any two properties of water.
16. The two gases Y and Z together make up about 99% of the air. Both these gases are colourless, tasteless and odourless. Gas Y is very reactive whereas gas Z is unreactive. Gas Y is necessary

for the process of respiration in plants and animals whereas gas Z is required by the plants to make proteins.

- (i) What are gases Y, and gas Z ?
- (ii) What is the percentage of gas Y, and gas Z, in the air?
- (iii) Which gas, Y or Z, neither burns nor supports the process of burning?

**OR**

- (i) Construct a pie-chart to show the different components of air.
- (ii) Justify why air is important for us.

17. (i) Differentiate between chemical change and physical change.  
(ii) Give two examples of irreversible change.
18. Compose an activity to show that like poles repel and unlike poles attract in a magnet

**OR**

Compose an activity to show that a freely suspended magnet always rests in the north-south direction.

19. Differentiate between:
  - (i) Conductors and Insulators
  - (ii) Primary and Secondary cell
20. Food is our basic necessity. It's perfect in your fridge, ready to be used, or stored in the freezer for another time. It's at its worst when it's in your bin. Saving food means saving money, but look at the bigger picture, too. Reducing food waste is good for the planet, as well as for the people who are unable to get a square meal in a single day also.  
  
Design a poster to create awareness in people of your society to help such poor people.
21. Explain how we can dispose non-biodegradable waste.
22. Justify why some time heat is necessary for a change. Give example.
23. (i) Explain the various parts of a flower with diagrams.  
(ii) State two modifications of root with examples.
24. With the help of an example, justify how bones and muscles work together to bring about movement.

**OR**

Explain the movement of an earthworm with a well-labeled diagram.

### **Section-C**

**[Q.25 to Q.30 5 Marks Long answer type questions]**

25. (a) What is atmosphere? Name the various gases present in the atmosphere.  
(b) List five activities that are possible due to the presence of air.

**OR**

- (a) Explain how do plants and animals maintain the balance of oxygen and carbon dioxide in the nature with a proper labeled diagram.

- (b) Explain how the process of transpiration is helpful in plants.
26. (i) Differentiate between open and closed electric circuits.  
(ii) Explain the working of an electric torch with a labeled diagram.
27. (i) How will you find out the two poles of a magnet?  
(ii) Outline three properties of a magnet.

**28. Answer the following-**

- (i) Discuss the water cycle with the help of a labeled diagram.  
(ii) Explain  
a. Precipitation b. Sublimation

**OR**

- (i) Define briefly: Floods, Droughts and Rain Water Harvesting.  
(ii) Explain rooftop rainwater harvesting with a well-labelled diagram.
29. (a) Photosynthesis in plants is possible only in the presence of sunlight. Justify this statement.  
(b) Explain the modifications of leaves along with suitable examples.

**30. Answer the following-**

- (i) Explain the structure of rib cage with a suitable diagram.  
(ii) Distinguish between vertebrates and invertebrates.

**OR**

- (i) Define biceps and triceps with diagram.  
(ii) What is a liquid skeleton?

-----x-----