



DELHI PUBLIC SCHOOL, GWALIOR

(Under the Aegis of DPS Society, New Delhi)

MODEL TEST PAPER

CLASS – VII

SUBJECT – SOCIAL SCIENCE

Time: 03 hrs.

M.M.: 80

General Instructions-

- (i) The question paper has 35 questions in all.
- (ii) Marks are indicated against each question.
- (iii) Questions from serial number **1** to **20** are objective type questions. Each question carries **one mark**. Answer them as instructed.
- (iv) Questions from serial no. **21** to **28** are **3 marks** questions. Answer of these questions should not exceed **80 words** each.
- (v) Questions from serial no. **29** to **34** are **5 marks** questions. Answer of these questions should not exceed **120 words** each.
- (vi) Question no. **35** is a map question of **6 marks** with 2 parts – **35 A** from History (2 marks) and **35 B** from Geography (4 marks).

Section-A

(Very Short Answer Questions)

[1x20=20]

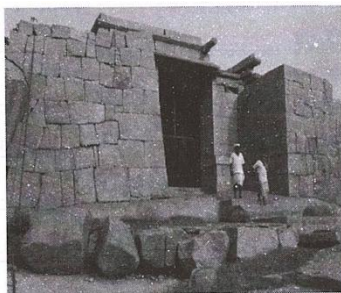
1. Match the following items given below:

<u>Column-A</u>		<u>Column-B</u>
a. Sher Shah	-	(i) Golden Age
b. Dantidurga	-	(ii) Thanjavur
c. Shah Jahan	-	(iii) Suri Dynasty
d. Raja Rajeshvara	-	(iv) Hiranya-garbha

2. Vasco da Gama discovered sea route to India in

- (a) 1447 (b) 1497 (c) 1498 (d) none of these

3. Identify the image and mark the correct location.



- (a) Surat (b) Hampi (c) Masulipatnam (d) Thanjavur

4. According to Akbar Nama, how many villages were there in the Gond kingdom of Garha Katanga?

5. In which language was Ramcharitmanas written?
(a) Hindi (b) Sanskrit (c) Awadhi (d) Punjabi
6. The term mansab means -
(a) tax (b) position / rank (c) rule (d) land
7. Who defeated Humayun at Kannauj?

OR

Who were the important trade – nomads?

8. Correct the following statement and rewrite:
In the Western Himalayas lived the tribe of Santhals.

OR

Nayanar saints were devoted to Vishnu and Alvars were devoted to Shiva.

9. Identify the picture and mark the correct option.



- (a) Manuscript (b) Bronze sculpture (c) Prashasthis (d) Travelogue
10. The Rashtrakutas were very powerful in the _____ region.

OR

During the Akbars reign, the revenue system was known as _____.

11. Who is the head of the ruling party?

OR

In which profession, do we find more women?

12. What did the court ask the government in Hakim Sheikh's case?
13. The first Indian woman who wrote an autobiography was
(a) Laxmibai (b) Rashsundari (c) Ramabai (d) Rokeya
14. **Write whether True or False.**
(a) Once appointed, the Governor cannot be removed from office.
(b) The opposition party forms the Government in a state.

15. Domestic violence involves
(a) Physical violence only (b) Mental violence only
(c) Violence inside the house (d) All of the above

16. Media should always try to provide a _____ report.

OR

_____ wrote the book Sultan's dream.

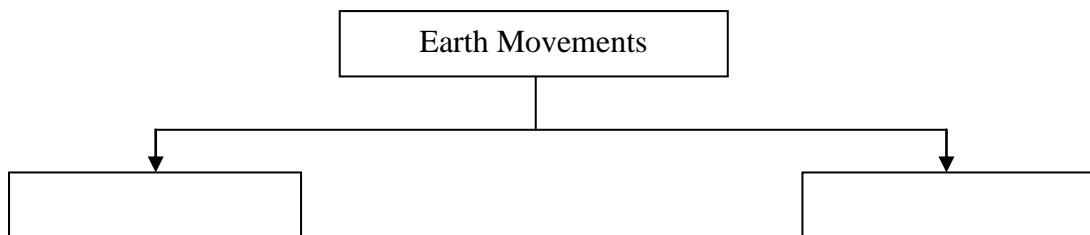
17. Find the incorrect option.

- (a) Velds are known for cattle rearing and mining.
- (b) Chinook is a cold wind that blows in winter.
- (c) Terrarium is an artificial enclosure for helping small house plants.

18. Which of the following is not a cash crop?

- (a) Maize
- (b) Cocoa
- (c) Coffee
- (d) Rice

19. Complete the flow chart given below:



20. Name some animals which are found in the Velds.

OR

Which animals are found in Amazon basin?

Section-B
(Short Answer Questions)

[3x8=24]

21. Define the term Cartographer.

OR

What are Prashastis?

22. Define 'Medical Tourists'.

23. What are 'Meanders'?

24. Define the term 'Birthright'.

OR

What is Pietra – Dura?

25. Explain the 'Three Orders', 'Knights' and 'Crusades'.

26. What kind of irrigation works were developed in the Tamil region?

27. Define the term 'Stereotype'.

OR

Differentiate between Public and Private Health Care.

28. List one reason why learning the alphabet was so important to women like Rashsundari Devi, Ramabai and Rokeya.

Section-C
(Long Answer Questions)

[5x6=30]

29. Describe Mughal relations with other rulers.

OR

What were the activities associated with Chola temples?

30. What do you understand by the term “all persons are equal before law”? Why do you think it is important in a democracy?
31. How are Intrusive and Extrusive rocks formed?
32. Explain the Exogenic and endogenic movements.

OR

Explain how are the following formed –

- (a) Flood plains
- (b) Beaches
- (c) Ox-bow lakes

33. What is earthquake? What are some common earthquake prediction methods?

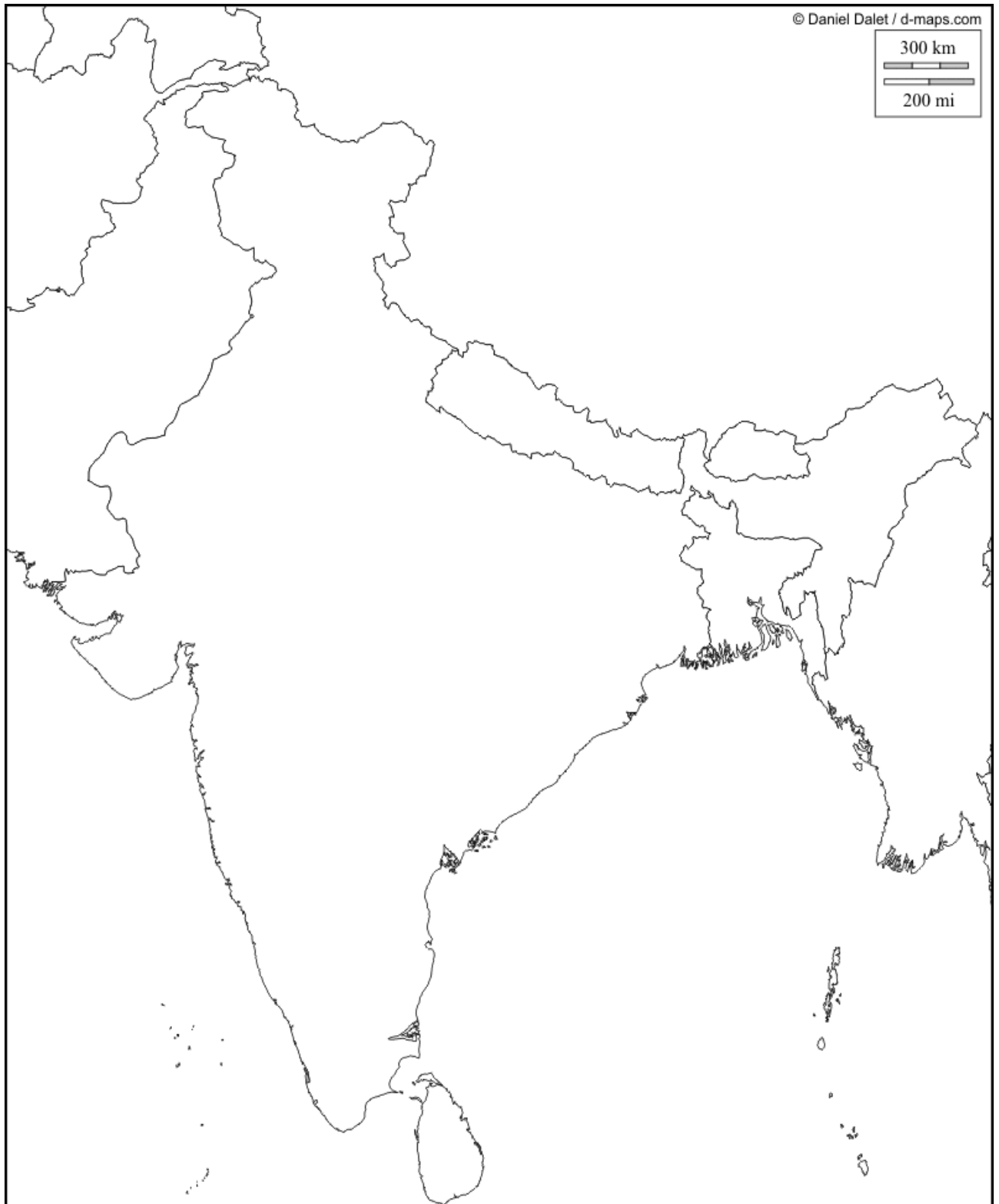
Section-D
(Map Skill)

34. On the outline map of India locate and label the following :- [2]
(1) Panipat (2) Golconda

35. On the outline map of world locate and label the following :- [4]
(1) Arabian sea (2) Caspian sea (3) Orange river (4) Arctic ocean

Name: Class: Section: R.No.:

Q.34 Map Skill - History



Q.35 Map Skill - Geography

